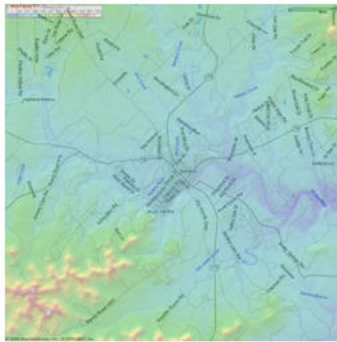


# WiBORNE, INC.

[www.wiborne.com](http://www.wiborne.com)

## SUCCESS STORY: *WiFi Bandera County, Texas*

Bandera County, Texas, *The Cowboy Capital of the World*, is serving county rural access broadband service, wireless internet, and VOIP services deployed by Dmarc Netcom, Inc. ([www.dmarc.us](http://www.dmarc.us)). Dmarc is a WISP available in Helotes, Texas.



**Bandera, Texas**

Kendall Wells, owner of Dmarc Netcom, started this service since August, 2004. With 20 years experience in the communication and computer technologies, Kendall serves as communications technology integrators that design, develop, install, configure, and maintain communications infrastructure and systems. Dmarc is on an expansion planned for WiFi San Antonio, Texas by Q3 2006.



**Base Station for Bandera Site**

Due to lack of long distance DSL / cable services around such rural areas, Dmarc expects that wireless service is the most convenient to deploy internet, VoIP, and video services in such area. Dmarc offers a number of service plans within this Bandera HotZone.



**View from tower of Base Station**



**Wireless Internet mounted on the top roof**



**Wireless Services from Dmarc**

For home service, Dmarc uses integrated third party customer premise equipment (CPE) devices to bring the broadband signal to houses.



**Bandera CPE for Home Users**

As of today, there have more than 70 of CPE are installed with these services. Dmarc can provide home users connection speeds comparable to

cable or DSL, without the costly and time consuming installation associated with those technologies.



**CPE devices aimed to Base Station**

To deploy Bandera site, Dmarc applied specification of WiBorne's Bandera Series Base Station, antenna model OA-24, large scale of Access Point WAP-250, and Hotspot gateway HSG-1000 that support 1000 concurrent users.



**OA-24  
Antenna**



**WAP-250 Access Point**

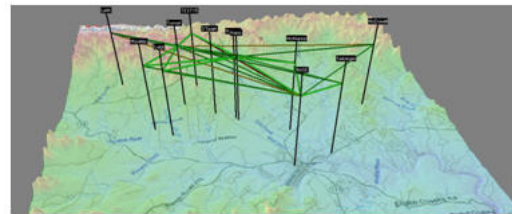


**HSG-1000 Hotspot Gateway**

Antenna OA-24 has great rejection of interference for most of WLAN systems, with 360 degrees direction for point-to-multi-points that is suitable for coverage of Bandera County. With WAP-250 as Access Point applies to this large public wireless access network without numerous smaller APs to construct wireless network. This reduces construction fees for such public areas. WAP-250 acts as a wireless broadcast without additional functions, while rest of operation functions are assigned to HSG-1000 Hotspot Gateway which performs authentication, authority, accounting, bandwidth control (QoS), IPSec VPN from gateway to individual clients, and management for all associated AP.

Based on the 802.11 standard (Wi-Fi) for backhaul and client access, the Bandera network requires no proprietary radio frequency (RF) equipment for access devices. The Wi-Fi

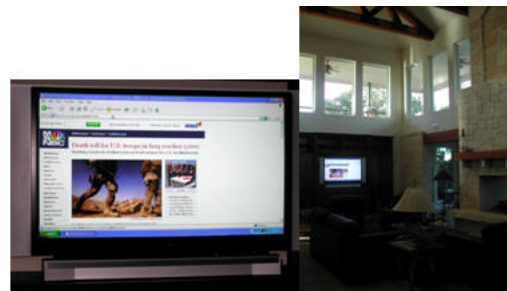
network delivers true broadband speeds to users accessing the network with a standard 802.11b client device. Additionally, mobile users such as Bandera Policy Department (BPD), and Fire Engine Department, have the ability to freely roam VPN wireless throughout the coverage area while the Bandera WiFi Series seamlessly and transparently perform node-to-node handoffs, ensuring the client continually has the most optimal path available back to the wired WiBorne HSG-1000 Gateway. No manual re-association of the client is required.



**Link Budget for Part of CPE Nodes**

#### **Authentication, Security from HSG-1000**

For security WiBorne has utilized a multi-layered approach, allowing them to operate a WiFi network that is even more secure than wired networks while running IPSec VPN mode. The features built into the 802.11 standard such as 64/128 bit WEP encryption act as early deterrents to hacking by casual users. Subscribers must sign in and be authenticated by local Kerberos, or external Domain Server, RADIUS, or LDAP in order to have access to the WiBorne network. During the registration and login process, all HTTP traffic is secured over SSL. WiBorne also supports public IP for home users and full VPN compatibility. Based on the login information, the WiBorne HSG-1000 enforces the network policies established by Dmarc, seamlessly providing the appropriate levels of service for which the subscriber has paid.



**Internet Services on the 62" Big Screen TV**

Dmarc also offer wireless VoIP service for Bandera site by installing internet telephony via

wireless. Simply plug a phone adapter onto client's CPE router and home users can dial up to outside by using wireless internet service.



**IP Camera for Security Surveillance**

Dmarc offers wireless webcam service for Bandera Site. Such system is perfect for security surveillance, business, education, and home monitoring. Bandera clients wonder how their business, school, website or family ever got along without it. Dmarc's webcam program is configured to monitor remotely and live website broadcasting. It can also automatically send an e-mail alert if its built-in motion alarm or another connected device, such as a smoke detector, is triggered.

## **Contact:**

**WiBorne, Inc.**  
4790 Irvine Blvd., Suite 105-458  
Irvine, California 92620 USA  
Phone: 949.903.8502  
Fax: 949.252.0888  
[www.wiborne.com](http://www.wiborne.com)  
Email: [sales@wiborne.com](mailto:sales@wiborne.com)

**Dmarc Netcom, Inc.**  
13740 Magnolia Way  
Helotes, TX 78023  
Phone: 210.416.3245  
Fax: 210.695.1079  
[www.dmarc.us](http://www.dmarc.us)  
Email: [sales.staff@dmarc.us](mailto:sales.staff@dmarc.us)

October 27, 2005