

Wireless-N 300mW High Power 2.4 / 5 GHz USB Adapter 150Mbps w/SMA Connector

WLU-5005U



WLU-5005U

The WLU-5005U is a portable size of 300mW ultra high power wireless USB 2.0 adapter that supports IEEE 802.11a/b/g/n (2.4 & 5 GHz). With 5dBi antenna, it provides a 0.58 Watt EIRP (27.6 dBm) for high-speed wireless connection with longest range. It has SMA connector that allows you to connect with external higher gain antenna. To protect your wireless connectivity, the high-speed wireless USB adapter can encrypt all wireless transmissions through industrial strength 64/128-bit WEP, WPA / WPA2, and TKIP-AES data encryption helps keep your communications and information private. With this high-speed wireless USB adapter, you will experience the best wireless connectivity available.

This is a conveniently compact and portable adapter that plugs into your laptop's USB port. Step-by-step Setup Wizard makes it easy to configure to your network's settings. It supports 802.11e standard Quality of Service support (QoS) for wireless multimedia enhancements. The LED indicator displays the current signal strength which helps you to find the best location to connect easily. Connecting to a wireless network is a breeze with automated Wi-Fi Protected Setup. Advanced wireless encryption ensures the highest data security. Wireless Multi Media (WMM) Quality of Service technology prioritizes streaming video, wireless gaming and online calls

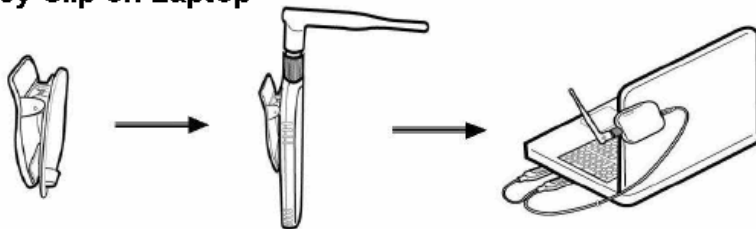
Features:

- High-speed 2.4/5 GHz 802.11 a/b/g/n dual band
- 300mW high power for very long range network for your desktop or notebook PC
- MIMO technology uses multiple radios for robust signal that travels farther and reduces dead spots
- External 5dBi Antenna and one on-board antenna for up to 0.58 Watt EIRP (27.6dBm)
- Software AP function allows you to create WiFi hotspot from your mobile computers.
- Supports up to 128-bit encryption with WPA / WPA2 / TKIP-AES.
- Support WPA/WPA2-Personal, WPA/WPA2-Enterprise
- Notebook clip-on design for easy portability
- USB 2.0 interface with 1.1 compatible
- Easy to use Setup Wizard
- Connects at a 150Mbps via USB 2.0, up to 8 times faster than a USB 1.1 adapter
- Providing SMA connector for high Gain antenna
- Nano size for greater flexibility
- Set wizard for fast configuration
- QoS with Wireless Multi Media (WMM)
- WPS hardware and software push button
- 802.11d for additional regulatory domains
- RTS & Fragment Threshold support
- Compatible with Microsoft Windows 7, XP, Vista, and 2000. MAC OS 10.4/10.5
- Japan Mid Band
- Ad-Hoc mode to connect with other cards for peer-to-file sharing or infrastructure mode.
- WoW and dual-core gaming
- Extended range and wireless roaming
- Software AP function supported
- Support Cisco Compatible eXtensions CCX

Wireless-N 300mW 802.11 a/b/g/n 150Mbps USB Adapter

Interface	USB 2.0 standard, USB 1.1 compliant
Model Number	WLU-5005U
Standard Conformance	IEEE802.11 802.11a/b/g compliant, 802.11n draft 3.0 IEEE802.11d, 802.11e, 802.11h, 802.11i compliant
Data Transfer Rate	802.11b: 1 / 2 / 5.5 / 11Mbps (auto sensing) 802.11a/g: 6 / 9 / 12 / 18 / 24 / 36 / 48 / 54Mbps (auto sensing) 802.11n: 150Mbps (TX) /300MBps (RX)
Access Method	AP-client, software AP, Infrastructure Mode, Ad-Hoc mode (802.11 Ad-Hoc), roaming
TX/RX	1 TX 2 RX
Operation Functions	Power Saving, WMM MAC address filter(Access or Reject list) Support ICS setting on-Win XP, Vista, Win7 Software AP on Windows XP, Vista, Win7
Quality of Service(QOS)	802.11e , WMM
International Regulation	802.11d
Security	WEP 64/128 bits,TKIP/802.11i, AES-CCMP, WPA-PSK, WPA2-PSK, 802.1x, EAP-TLS, EAP-TTLS,PEAP-TL, PEAP(EAP-GTC), PEAP (EAP-MSCHAPv2), WPS. WPA/WPA2-Personal, WPA/WPA2-Enterprise, Cisco CCX Support
Frequency Range	802.11b/g: 2.4 to 2.484GHz; 802.11a: 5.15 to 5.85GHz; 802.11n: 2.4/5 GHz
Wireless Medium	OFDM & DSSS (with Barker coding and CCK for backward compatibility with 802.11b)
Media Access Protocol	Carrier Sense Multiple Access with Collision Avoidance (CSMA/CA)
Bandwidth Channel	20MHz / 40MHz
Modulation Method	DSSS with CCK,DQPSK,DBPSK; OFDM with BPSK,QPSK,16QAM,64QAM
Operating Channels	US, Canada: 2.412GHz~2.462 GHz (CH1~CH11) EU, Japan: 2.412GHz~2.472GHz (CH1~CH13) US, Canada: 5.15GHz~5.35GHz; 5.725GHz~5.850GHz EU, Japan: 5.15GHz~5.35GHz; 5.47GHz~5.725GHz
Transmit Power	27dBm @ 11b/g (1 to 6 Mbps); 21dbm@ 11bgn HT20; 20dbm@ 11bgn HT40 18dbm@ 11a (1 to 6 Mbps); 13dbm@11a HT20; 14dbm@11a HT40
Receiver Sensitivity (dBm)	802.11b/g/n: -91 / 1Mbps, -77 / 54Mbps; -92 / HT20 MCS 0, -88 / HT40 MCS 0 802.11a/n: -93 / 6Mbps, -78 / 54Mbps; -92 / HT20 MCS 0; -88 / HG40 MCS 0
Antennas	1 x 2.4/5GHz RP-SMA connector with 5 dBi Antenna, 1 x Dual band print antenna
Operating systems	Windows Vista 64/32, Windows 7/XP 64/32, Window 2000; MAC OS 10.4/10.5
Power Voltage	5V+5%
Operating Temperature	32 °F ~ 122 °F (0 °C ~ 50 °C)
Storage Temperature	-23 °F ~ 149 °F (-10 °C ~ 65 °C)
Humidity	Operating: 20 % to 85% Non-Condensing; Storage: 10% to 90% Non-Condensing
Dimension / Weight	8.5 X 2.2 X 6.3 cm / 38 grams
Package	a/b/g/n USB Adapter x 1; USB Y-Cable x 1; 5 dBi Antenna x 1; CD-ROM (Driver manual) x 1

Easy Clip on Laptop



WiBorne
Take your wireless airborne.
WiBorne, Inc. www.wiborne.com
sales@wiborne.com

USA Office:
4790 Irvine Blvd., Suite 105-458,
Irvine, CA 92620
Tel: 1-949-903-8502
Fax: 1-949-252-0888

Taiwan Office:
No.5, Qiyang Rd., Beitou District,
Taipei City 112, Taiwan
Tel: 886-2-2898-4050
Fax: 886-2-2896-9157